

# Vancouver Advertising Slo-Pitch League: 2023 Park List

<b>PARK</b>	<b>DIAMONDS</b>	<b>DAYS</b>
Balaclava Park	SW	Some Wednesdays
Bobolink Park	NE/NW (Pair)	Tuesdays
Bobolink Park	SW/EC (Pair)	Wednesdays Some Mon, Tue, Thu
Carnarvon Park	SW*	Some Mon, Tue, Thu
Churchill Secondary	North	Mondays, Tuesdays
Columbia Park	SE*	Mon, Tue, Thu Some Wed, Fri
Connaught Park	SC/SE (Pair)	Some Mon, Tue, Thu
Douglas Park	NW*	Tue, Wed, Fri Some Thursdays
Douglas Park	SC/SE (Pair)	Mondays, Wednesdays
Douglas Park	SW*	Mon, Tue, Thu Some Fridays
Gaston Park	NW	Mondays after Victoria Day
Gordon Park	NWC	Mondays Some Thursdays, Fridays
Gordon Park	SE	Thursdays
Jericho Park	North	Mon, Wed, Thu, Fri
Memorial South Park	NW	Tuesdays
Montgomery Park	NW*	Sundays, Thursdays, Fridays
Montgomery Park	SE*	Sundays, Tuesdays, Fridays
Montgomery Park	SW*	Sun, Tue, Wed, Fri
Norquay Park	SW	Thursdays, Fridays Some Mon, Tue, Wed
Queen Elizabeth Elementary	SE	Mondays
Strathcona Park	Center	Thursdays, Fridays
Tisdall Park	SW	Thursdays, Fridays

---

*Diamonds above marked with an asterisk (\*) are also used during the Season Ending Weekend Playoffs*

**Additional Playoff Tournament Diamonds (August 12-13, 19-20)**

Columbia Park NE / Montgomery NE / Tisdall Park NE

# Park Information: Parking / Issues / Problems

Balaclava Park (West 31<sup>st</sup> Ave between Balaclava and Blenheim Streets)

**\*\*\*New for 2023\*\*\***



On some Wednesdays this season we are trying out Balaclava SW diamond as a lower division replacement for Earles Park. No bathrooms, thus no doubleheaders.

**Bobolink Parks (Nanaimo St & Hoylake Ave - near East 61st Ave)**



On Tuesdays we have Bobolink NE and NW. Only one park is used at a time to prevent outfield interference, and since most players are right handed batters, we schedule the NE diamond as the main diamond, so that there's a deep left field. If there's a problem with the NE diamond, or if both teams have lots of left-handed hitters and want to set up on the NW diamond instead, do so, but send someone to the NE diamond to let the umpire know.

On Wednesdays, we have the Bobolink SW and East Center (EC) diamonds. Games are scheduled at the SW diamond; the EC diamond is left vacant to prevent any interference between the two outfields. Starting in July we have additional games at Bobolink SW on Mondays, Tuesdays, and Thursdays.

Bobolink bathrooms are in the far NE corner of the park.



**Carnarvon Park (Between West 16<sup>th</sup> and 19<sup>th</sup> Avenues west of Mackenzie St)**

We have the SW diamond for a few Tuesdays and Thursdays during the regular season. We also use this diamond during the August tournament. There are bathrooms out along the third base line.

**Park Issues**

- None



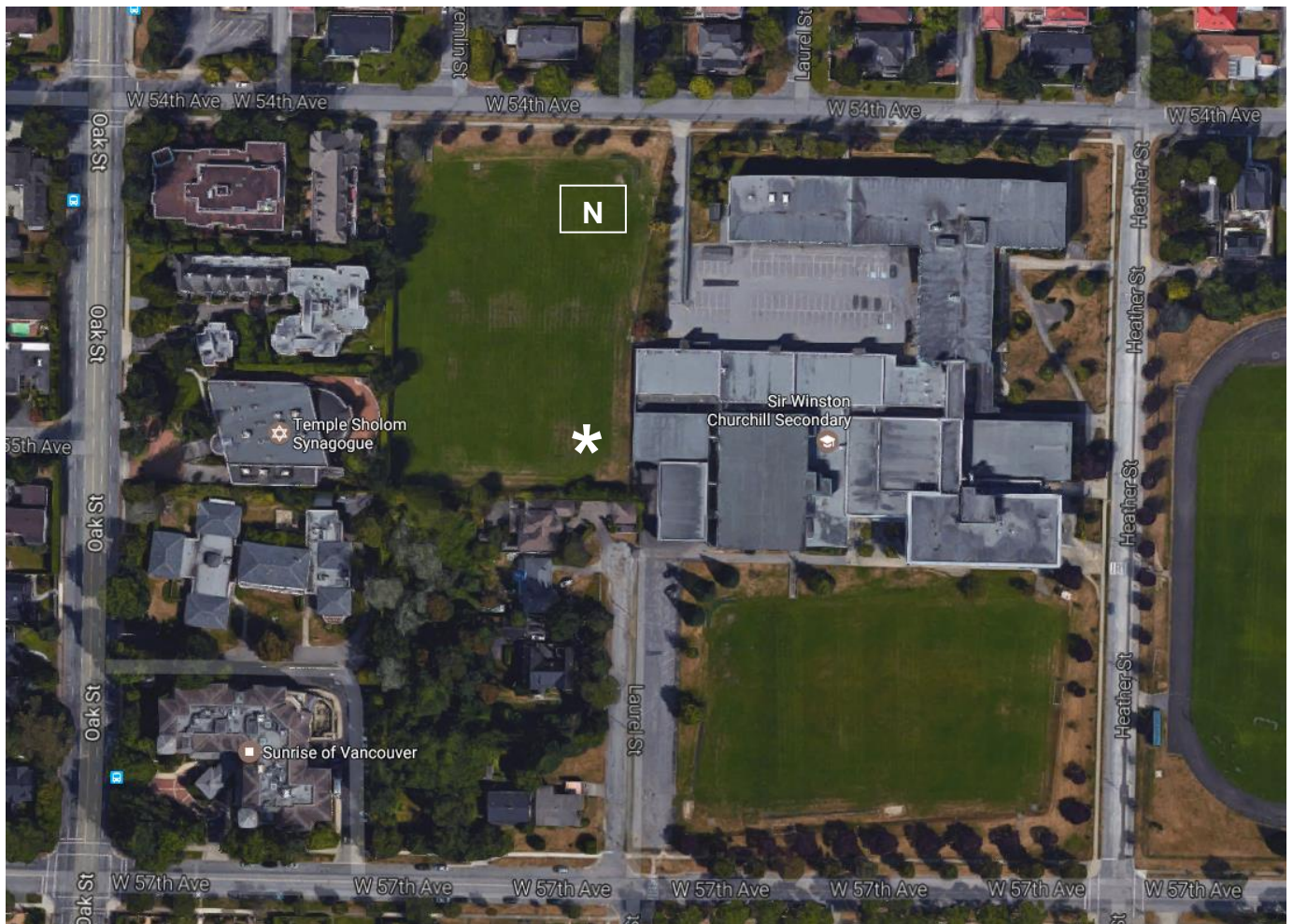


## **Churchill Secondary School North (West 54th Ave & Laurel St) - one block east of Oak St**

North side of Churchill Secondary, off of West 54th Ave.

### **Park Issues:**

- School Board diamond - so no bathrooms! No doubleheaders are scheduled for Churchill, so take care of your "business" before the game.
- Not used until early May. Early in the season, the infield can get waterlogged and lumpy - if it dries that way it's a hazard to play on. If this is the situation, set up home plate in the deep left field corner (see the \* below), and play "backwards" on the field, with the normal infield now being the extreme outfield. And let the VASL know the next day.



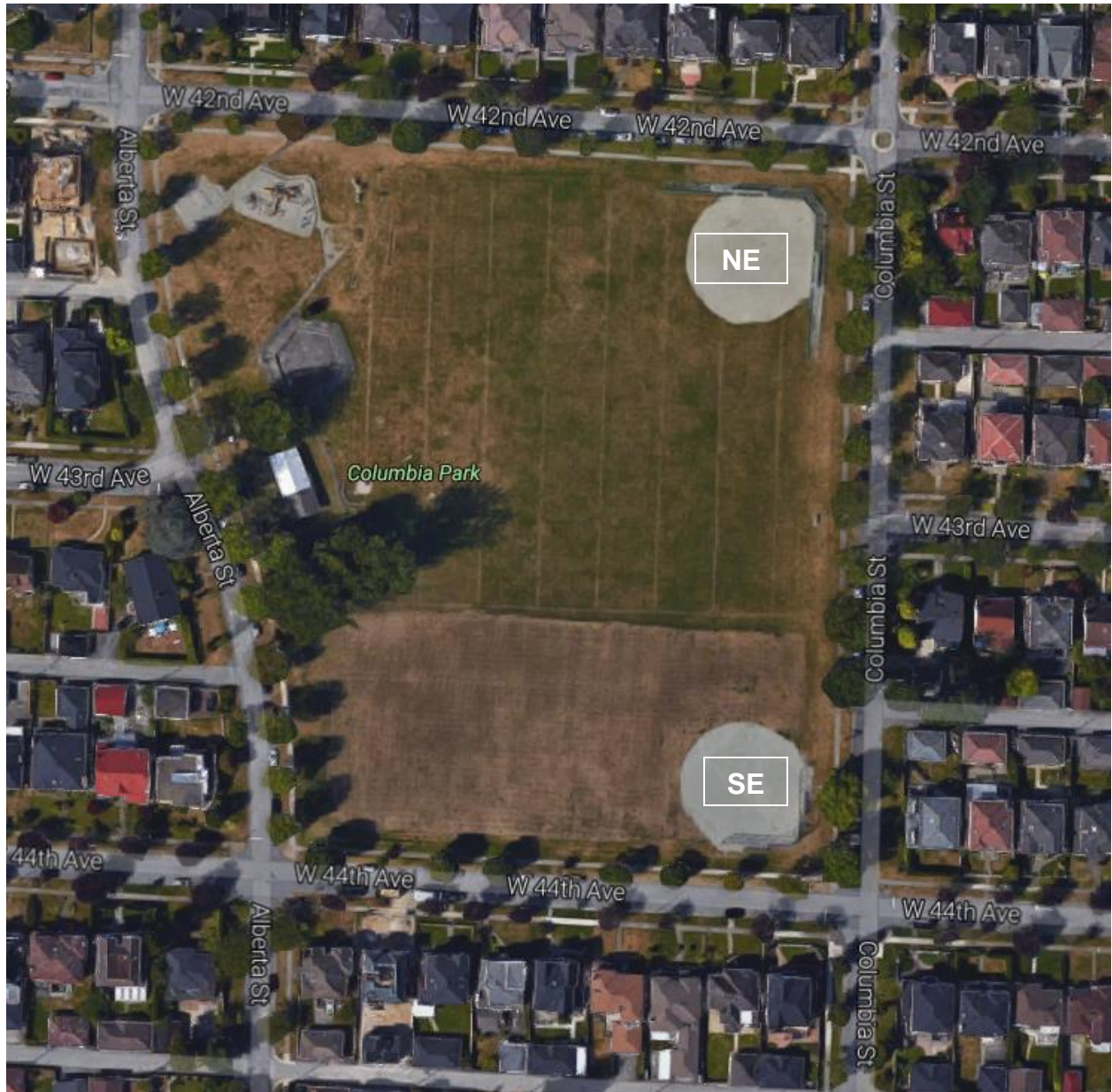
## **Columbia Park (West 44th Ave & Columbia St) - two blocks east of Cambie**

We use the SE diamond (at West 44th Ave) during the regular season. There can sometimes be a hole in the infield near 1st base (or 3rd), but there is usually a pile of infield dirt nearby that can be transferred in to fill the hole.

The NE diamond is used only during the August tournament.

### **Park Issues:**

- The clubhouse was never rebuilt after a fire, so no bathrooms and no doubleheaders.





## **Connaught Park (West 12th Ave & Vine St) - two blocks west of Arbutus**

We have some of the diamonds at Connaught Park starting in mid-July on Mondays, Tuesdays, and Thursdays for the final month of the season.

We will use the SC diamond (at 12th and Vine) during the regular season. We've also booked the SE diamond for the same nights so that there is no interference in left field. The NE diamond is far enough away that whatever league uses that won't interfere with our games much if at all.

Bathrooms are at the north end of the park, near where it says Meraloma Cricket Club on the map.

We don't use the NE or NW diamonds at all.



**Douglas Parks (one block east of Oak St, between West 20th & 22nd Avenues)**



Douglas NW and SW are on the west side of the Douglas Park Community Center off of Laurel St. They are full sized diamonds and on Tuesdays are generally both used by the VASL at the same time. Douglas SC and SE are on the east side of the community center, and are not full sized diamonds - the outfields overlap much too closely. So all VASL games are played at Douglas SE - we also book SC so that left field is kept open for our games.

**Park Issues:**

- **SE Diamond:** Field (especially the infield) is tilted very slightly - pitcher has to pitch up hill.
- **All Douglas Diamonds:** Keep all equipment, chairs, etc. off the wood chip jogging path.

At all parks, but especially the Douglas Parks, you know the rules about alcohol! More than a few Douglas Park residents want softball banned from the park - don't give them an excuse.



## **Gaston Park (Just east of Joyce St) - between Euclid Ave, Tyne Dr, and Crowley St**

### **Park Issues**

- Infield prone to flooding during extended wet weather, so not booked until late May.
- Soccer games sometimes start in outfield - have permit ready and boot them off (and report to VASL).
- No bathrooms – therefore no doubleheaders.



**Gordon Park (East 49th Ave between Argyle St & Commerical St)**  
**East of Knight St and West of Victoria Drive**



Gordon Park is a large complex of seven diamonds. We use two - the NW Centre diamond (NWC) and the southeast diamond (SE). There's a small children's area just south of Gordon NWC. The bathrooms are on the east side of the park, by the baseball diamond. We have the SE diamond every Thursday, while the NWC diamond is used on Mondays, plus some Thursdays and Fridays.

**Park Issues:**

- SE diamond has a very shallow backstop - and some sharp exposed fencing. When setting up the infield, set up the home plate as far as possible while still keeping the bases on the dirt infield. Make sure players are aware of the fence and avoid running into it when scoring.



## **Jericho Park (off Discovery St, north of NW Marine Dr) - near Jericho Youth Hostel**

Jericho Park is reached by heading west along West 4th Ave, and taking the right turn-off onto NW Marine Drive. The diamond [JER] is located just north of the large lit artificial turf soccer pitch (Jericho West Field on the map). The diamond is right across Discovery St from the (expensive) parking lot which gets patrolled regularly.

### **Park Issues:**

- Parking is expensive. Car Pool if possible, or park for free on NW Marine Drive (in the area in red).
- Furthest west diamond. Around mid-May, games start at 7 PM to allow for extra drive time.

### **Bonus for Jericho:**

Just north of the diamond is the Jericho Sailing Center. They have a snack bar and a large patio with a beautiful view of English Bay. Perfect place to have a burger and beer and watch the sun set during the summer.



**Memorial South (between East 41st and 45th Avenues, two blocks east of Fraser St)**

Our newest diamond, courtesy of the Safeway League!

We have the NW diamond on Tuesdays – it’s a bit short in left and center fields, so won’t be used for the “A” Division. It can be used for doubleheaders as there are bathrooms – they’d be found south of first base on the NE diamond. We don’t use the NE diamond as it’s often closed due to games at the baseball diamond in the far NE corner.

Closest parking is on Prince Albert St, a couple blocks east of Fraser St.





## **Montgomery Parks (between West 43rd and 45th Avenues, one block west of Oak St)**

The latest satellite map shows a construction mess, so we'll use the map below for the time being.

There are now four diamonds at Montgomery: we have permits at NW, along with the SE and SW diamonds. We hope to get a permit or two at the NE diamond and we should get it permanently for our August playoff weekends.

The two north diamonds are on West 43<sup>rd</sup> Ave just west of Oak Street, while the two south diamonds face West 45<sup>th</sup> Ave.

The clubhouse bathrooms are east of the new NE diamond.

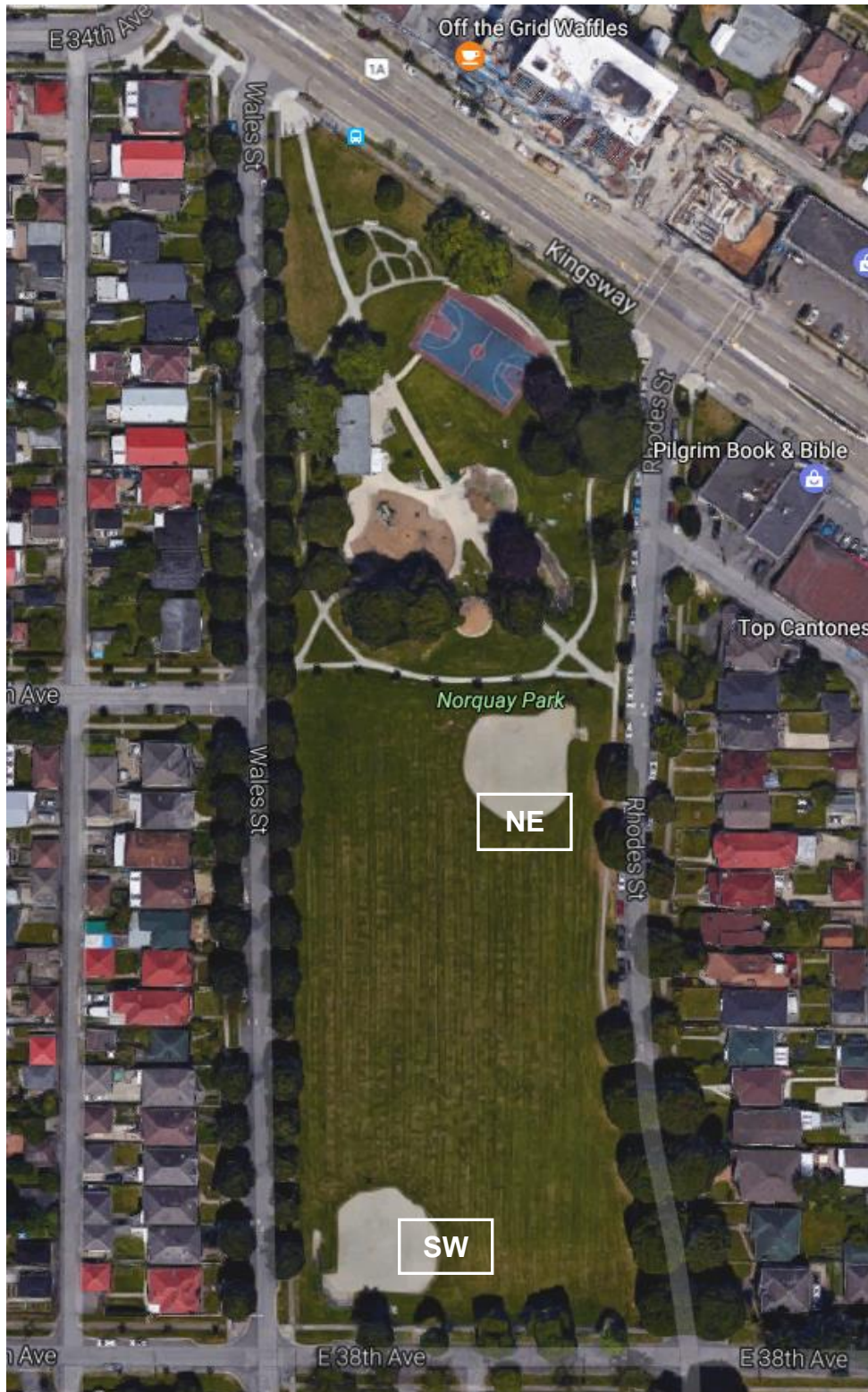
### **Park Issues:**

- As of April 2023 there are nice dugouts at the diamonds, but no benches. So bring your own chairs.



**Norquay Park SW (East 38th Ave at Wales St, just south of Kingsway)**

We use the SW diamond at Norquay Park; we don't use the NE diamond. Bathrooms are to the north and west of the NE diamond, near the children's play area.





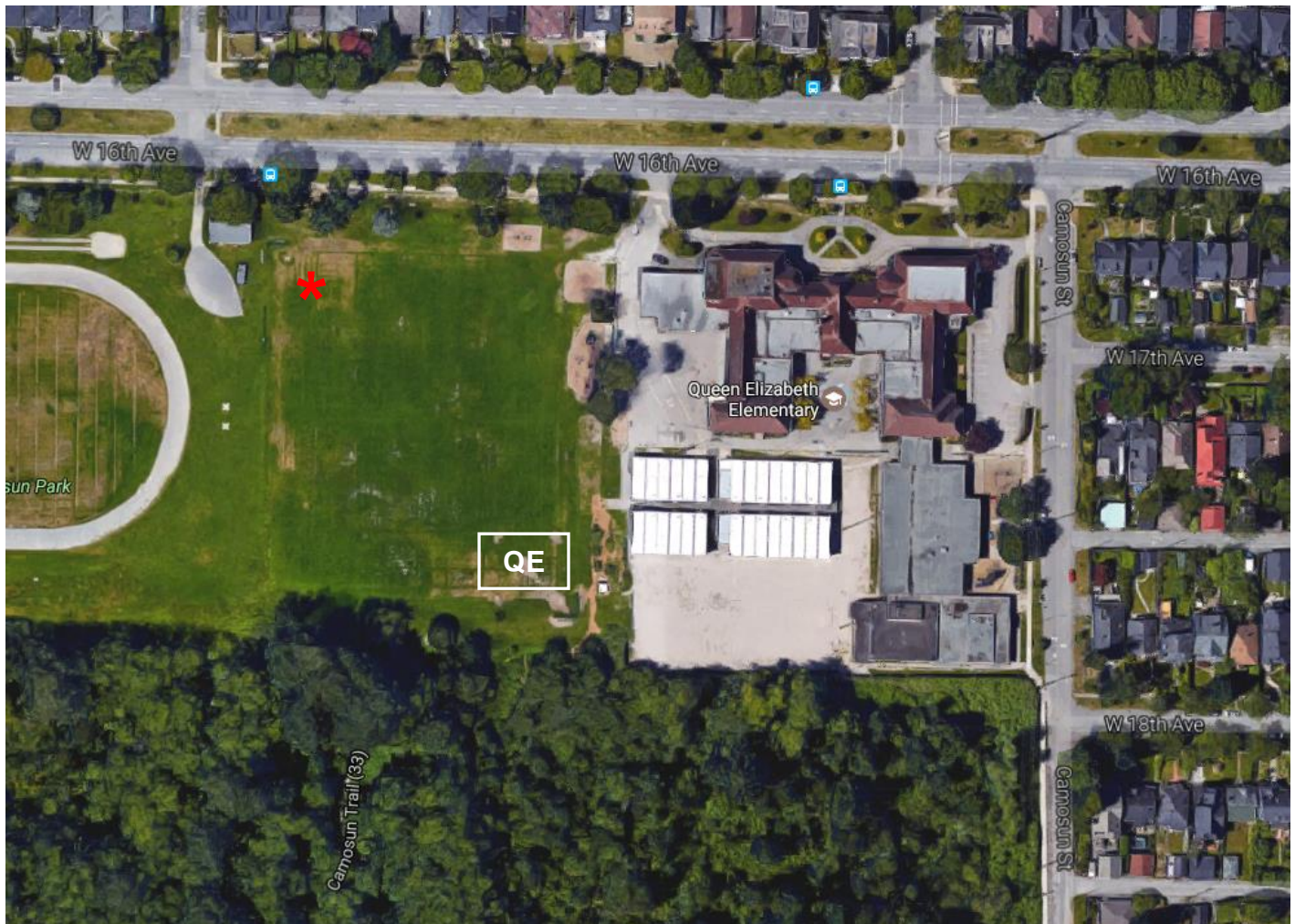
## **Queen Elizabeth Elementary (West 16th Ave and Courtenay St) - five blocks west of Dunbar St**

This is not at Queen Elizabeth Park! After Jericho, this is our second most westerly diamond. As one of two School Board diamonds (the others being Churchill North), there are several diamond issues.

### **Park Issues:**

- As this is fairly far west, games start at 7:00 PM after mid-May.
- No bathrooms - and none nearby! No doubleheaders are played at QE, so take care of any "business" before coming to the park.
- An exposed drainage grate is just beyond third base in foul territory. Mark with an orange cone and make sure everyone is well aware of it.
- Field is right next to some woods - there are tons of mosquitoes some days, so bring repellent
- Children's playground in (fairly) deep right field foul territory. Be sure to warn anyone there about the game being played, as some parents are incredibly ignorant and don't seem to notice balls coming at them.
- If the regular diamond (in the SE corner of the field below) has been aerated (turf pellets all over the place) set up in the NW corner instead (see the 🔄 below).

**Don't use the woods as a bathroom!** Residents on Dunbar street have reported this in the past, and have caused headaches for us and other leagues.





## **Strathcona Park (west of Raymur Ave, south of Prior St)**

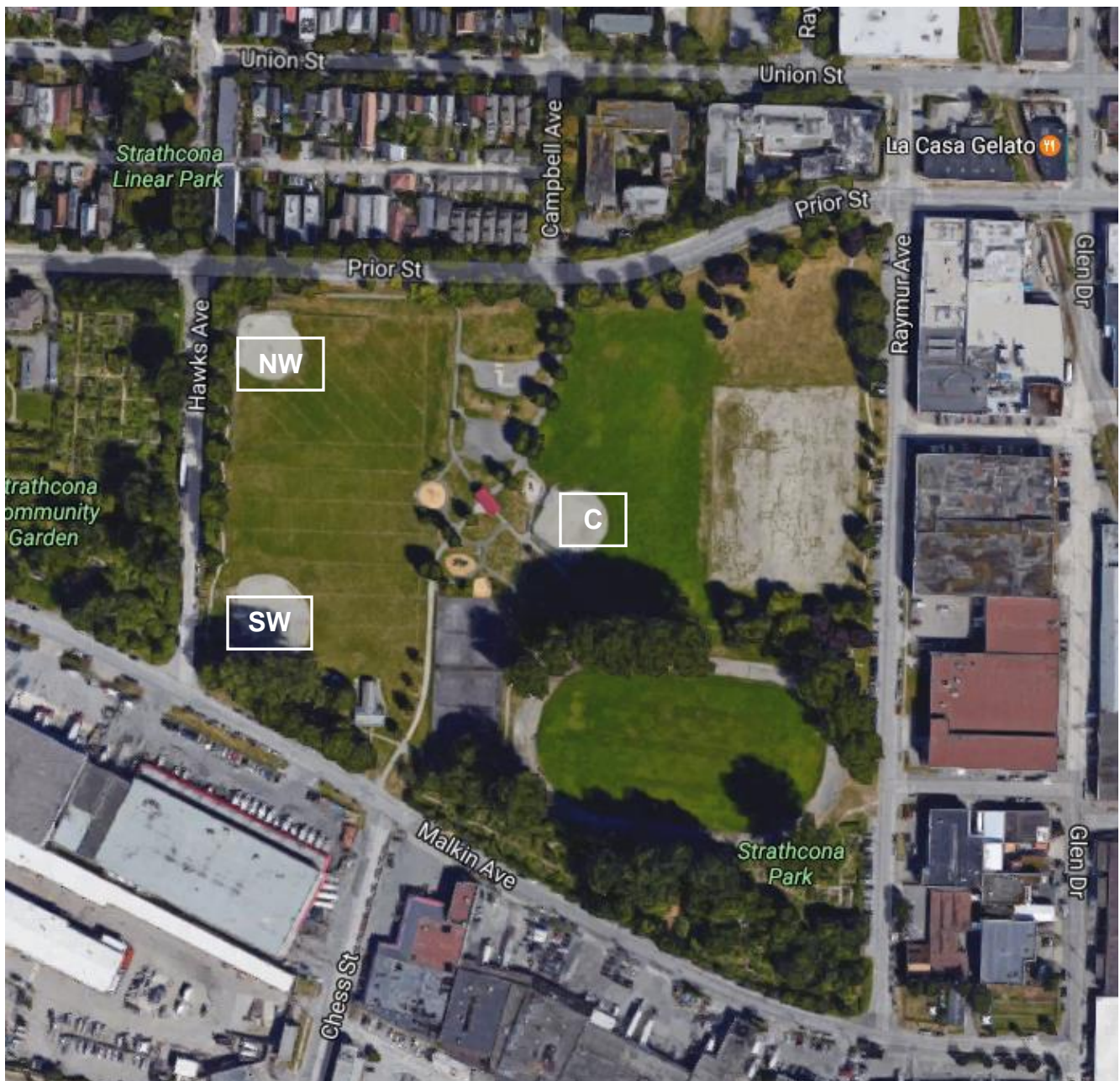
### **Park Issues:**

- There was a manhole cover in center field. The VPB has supposedly lowered it a few inches put turf over it. If it's still there, mark with a traffic cone and let the VASL know.

Best place to park is the free parking area on Raymur Ave - then walk west across the gravel field. Strathcona has three diamonds. We play at the largest one - Strathcona Center - which is the first one you'll come to - and it's the easternmost of the three diamonds (see below). We don't use the NW or SW diamonds. Bathrooms are located near the SW diamond.

### **Bonus for Strathcona**

La Case Gelato (upper right corner of map) is only a five minute walk from the park at Prior St and Venables St. Perfect place for great Italian ice cream after the game.





**Tisdall Park (off Ash St and West 49th Ave) - one block west of Cambie St**

**\*\*\*Closed for 2023\*\*\***

We use the SW diamond (nearest West 49th) - it's far enough from the NE diamond that there's never any outfield interference if games are going on at both diamonds.

The NE diamond is used by us during the August tournament.

**Park Issues:**

- Since there's a school nearby, the Parks Board only supplies a "portable" bathroom. It may not be there, so no doubleheaders are scheduled here.
- There are woods on the west and south sides of the diamond, so there are sometimes mosquitoes depending on the weather.

